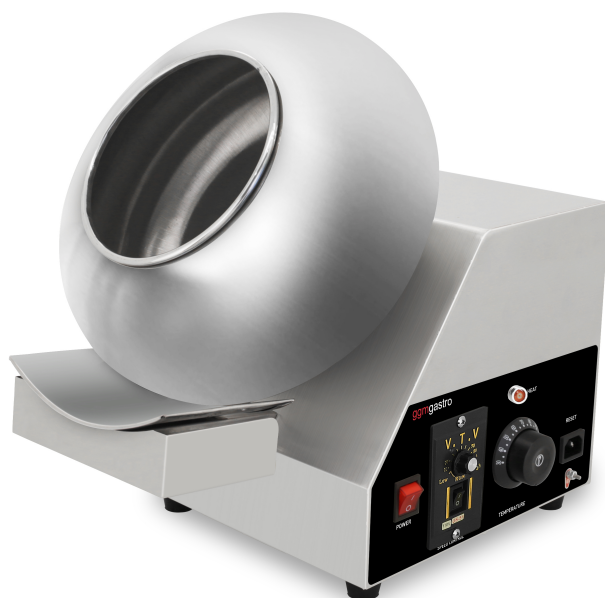




CHOCOLATE COATING MACHINE



USER MANUAL

Thank you for purchasing our Chocolate coating machine for your business

To ensure optimal and safe use, please read these instructions

Technical data

| Parameter description | Parameter value |
|---|---------------------------|
| Product name | Chocolate coating machine |
| Model | DMN3 |
| Rated voltage [V~] / frequency [Hz] | 230/50 |
| Rated power [W] | 600 |
| Protection rating IP | IPX3 |
| Dimensions [width x depth x height; mm] | B305 x T420 x H427 |
| Weight [kg] | 11.4 |

1. General description

The user manual is designed to assist in the safe and trouble-free use of the device. The product is designed and manufactured in accordance with strict technical guidelines, using state-of-the-art technologies and components. Additionally, it is produced in compliance with the most stringent quality standards.

DO NOT USE THE DEVICE UNLESS YOU HAVE THOROUGHLY READ AND UNDERSTOOD THIS USER MANUAL.

To increase the product life of the device and to ensure trouble-free operation, use it in accordance with this user manual and regularly perform maintenance tasks. The technical data and specifications in this user manual are up to date. The manufacturer reserves the right to make changes associated with quality improvement. The device is designed to reduce noise emission risks to a minimum, taking into account technological progress and noise reduction opportunities.

Legend



The product satisfies the relevant safety standards.



Read instructions before use.



The product must be recycled.



WARNING! or **CAUTION!** or **REMEMBER!** Applicable to the given situation.
(general warning sign)



ATTENTION! Electric shock warning!



ATTENTION! Rotating parts, entanglement hazard!



ATTENTION! Hot surface, risk of burns!



Only use indoors.



PLEASE NOTE! Drawings in this manual are for illustration purposes only and in some details may differ from the actual product.

2. Usage safety



ATTENTION! Read all safety warnings and all instructions. Failure to follow the warnings and instructions may result in electric shock, fire and/or serious injury or even death.

The terms "device" or "product" are used in the warnings and instructions to refer to:

Chocolate coating machine

2.1. Electrical safety

- a) The plug must fit the socket. Do not modify the plug in any way. Using original plugs and matching sockets reduces the risk of electric shock.
- b) Avoid touching earthed elements such as pipes, heaters, boilers and refrigerators. There is an increased risk of electric shock if the earthed device is exposed to rain, comes into direct contact with a wet surface or is operating in a damp environment. Water getting into the device increases the risk of damage to the device and of electric shock.
- c) Use the cable only for its designated use. Never use it to carry the device or to pull the plug out of a socket. Keep the cable away from heat sources, oil, sharp edges or moving parts. Damaged or tangled cables increase the risk of electric shock.
- d) To avoid electric shock, do not immerse the cord, plug or device in water or other liquids. Do not use the device on wet surfaces.
- e) **ATTENTION! DANGER TO LIFE!** While cleaning, never immerse the device in water or other liquids.
- f) Do not use in very humid environments or in the direct vicinity of water tanks.

2.2. Safety in the workplace

- a) Make sure the workplace is clean and well lit. A messy or poorly lit workplace may lead to accidents. Try to think ahead, observe what is going on and use common sense when working with the device.
- b) Do not use the device in a potentially explosive environment, for example in the presence of flammable liquids, gases or dust. The device generates sparks which may ignite dust or fumes.
- c) If there are any doubts as to the correct operation of the device, contact the manufacturer's support service.
- d) Only the manufacturer's service point may repair the device. Do not attempt any repairs independently!
- e) In case of fire, use a powder or carbon dioxide (CO₂) fire extinguisher (one intended for use on live electrical devices) to put it out.
- f) Children or unauthorised persons are forbidden to enter a work station. A distraction may result in loss of control over the device.
- g) Regularly inspect the condition of the safety labels. If the labels are illegible, they must be replaced.
- h) Please keep this manual available for future reference. If this device is passed on to a third party, the manual must be passed on with it.
- i) Keep packaging elements and small assembly parts in a place not available to children.
- j) Keep the device away from children and animals.
- k) If this device is used together with another equipment, the remaining instructions for use shall also be followed.



Remember! When using the device, protect children and other bystanders.

2.3. Personal safety

- a) Do not use the device when tired, ill or under the influence of alcohol, narcotics or medication which can significantly impair the ability to operate the device.
- b) The device can be handled only by physically fit persons who are capable of handling it, properly trained, familiar with this manual and trained within the scope of occupational health and safety.
- c) When working with the device, use common sense and stay alert. Temporary loss of concentration while using the device may lead to serious injuries.

- d) Use personal protective equipment as required for working with the device, specified in section 1 "Legend". The use of correct and approved personal protective equipment reduces the risk of injury.
- e) To prevent the device from accidentally switching on, make sure the switch is on the OFF position before connecting to a power source.
- f) Do not wear loose clothing or jewellery. Keep hair, clothes and gloves away from moving parts. Loose clothing, jewellery or long hair may get caught in moving parts.
- g) The device is not a toy. Children must be supervised to ensure that they do not play with the device.

2.4. Safe device use

- a) Do not use the device if the „ON/OFF“ switch does not function properly (does not switch the device on and off). Devices which cannot be switched on and off using the ON/OFF switch are hazardous, should not be operated and must be repaired.
- b) Make sure the plug is disconnected from the socket before attempting any adjustments, accessory replacements or before putting the device aside. Such precautions will reduce the risk of accidentally activating the device.
- c) When not in use, store in a safe place, away from children and people not familiar with the device who have not read the user manual. The device may pose a hazard in the hands of inexperienced users.
- d) Keep the device in perfect technical condition. Before each use check for general damage, especially check moving components for cracked parts or elements, and for any other conditions which may impact the safe operation of the device. If damage is discovered, hand over the device for repair before use.
- e) Keep the device out of the reach of children.
- f) Device repair or maintenance should be carried out by qualified persons, only using original spare parts. This will ensure safe use.
- g) To ensure the operational integrity of the device, do not remove factory-fitted guards and do not loosen any screws.
- h) Avoid situations where the device stops working during use due to excessive loading. This may result in overheating of the drive elements and damage to the device.
- i) Do not move, adjust or rotate the device in the course of work.
- j) Do not leave this appliance unattended while it is in use.
- k) Clean the device regularly to prevent stubborn grime from accumulating.
- l) The device is not a toy. Cleaning and maintenance may not be carried out by children without supervision by an adult person.
- m) It is forbidden to interfere with the structure of the device in order to change its parameters or construction.
- n) Keep the device away from sources of fire and heat.
- o) Do not overload the device.
- p) Do not cover the ventilation openings!



ATTENTION! Despite the safe design of the device and its protective features, and despite the use of additional elements protecting the operator, there is still a slight risk of accident or injury when using the device. Stay alert and use common sense when using the device.

3. Use guidelines

The device is intended for coating seeds, nuts, almonds, raisins or coffee beans with chocolate.

The user is liable for any damage resulting from unintended use of the device.

3.1. Device description



- 1 – Rotary drum
- 2 – Power switch
- 3 – RPM switch
- 4 – RPM control knob
- 5 – Heating indicator light
- 6 – Thermostat knob
- 7 – Reset switch
- 8 – Power cord socket

3.2. Preparing for use

APPLIANCE LOCATION

The temperature of environment must not be higher than 40°C and the relative humidity should be less than 85%. Ensure good ventilation in the room in which the device is being used. There should be at least 10 cm distance between each side of the device and the wall or other objects. The device should always be used when positioned on an even, stable, clean, fireproof and dry surface, and be out of the reach of children and persons with limited mental and sensory functions. Position the device such that you always have access to the power plug. The power cord connected to the appliance must be properly grounded and correspond to the technical details on the product label.

Disassemble the device and all its components and clean them before the first use.

3.3. Device use

The machine has a heating function.

The chocolate can be melted in the drum and then transferred to another container. Place the products to be coated with chocolate into the drum, turn on the drum rotation and add the melted chocolate. Adjust the speed of the drum rotation to suit the products to be coated and the effects to be obtained. Chocolate polishing material can be added. Adjust the drum rotation time to distribute the chocolate evenly over the products, while blowing cold or hot air into the drum (as required) to remove water from the surface of the coated products.

3.4. Cleaning and maintenance

- a) Unplug the mains plug and allow the device to cool completely before each cleaning, adjustment or replacement of accessories, or if the device is not being used.
 - Wait for the rotating elements to stop.
- b) Use only non-corrosive cleaners to clean the surface.
- c) Use only mild, food-safe detergents to wash the device.
- d) After cleaning the device, all parts should be dried completely before using it again.
- e) Store the unit in a dry, cool place, free from moisture and direct exposure to sunlight.
- f) Do not spray the device with a water jet or submerge it in water.
- g) Do not allow water to get inside the device through vents in the housing of the device.
- h) Clean the vents with a brush and compressed air.
- i) The device must be regularly inspected to check its technical efficiency and spot any damage.
- j) Use a soft, damp cloth for cleaning.
- k) Do not use sharp and/or metal objects for cleaning (e.g. a wire brush or a metal spatula) because they may damage the surface material of the appliance.
- l) Do not clean the device with an acidic substance, agents of medical purposes, thinners, fuel, oils or other chemical substances because it may damage the device.

DISPOSING OF USED DEVICES:

Do not dispose of this device in municipal waste systems. Hand it over to an electric and electrical device recycling and collection point. Check the symbol on the product, instruction manual and packaging. The plastics used to construct the device can be recycled in accordance with their markings. By choosing to recycle you are making a significant contribution to the protection of our environment.

Contact local authorities for information on your local recycling facility.



GGM Gastro International GmbH
Weinerpark 16
D-48607 Ochtrup

www.ggmgaastro.com

info@ggmgaastro.com

+49 2553 7220 0