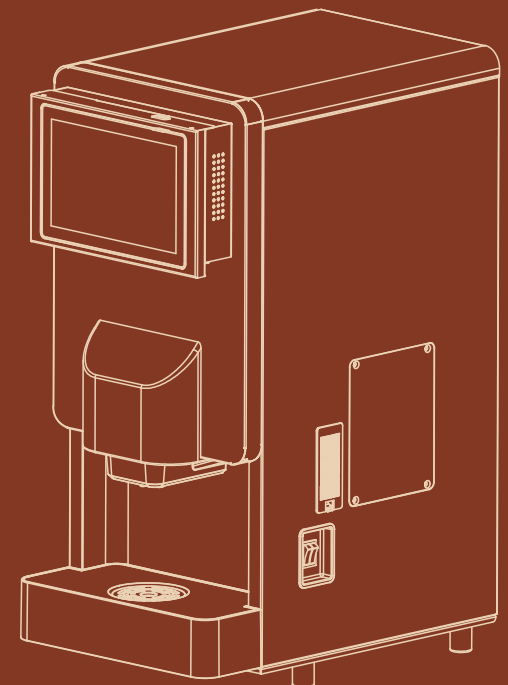


**ggmgastro**

# Manual KVAA4

Please read the content carefully before use

All-in-one  
Coffee and Beverage Dispenser



# CONTENTS

**01**

About Daka

**02**

Installation notes

**03**

Cleaning and maintenance

**04**

Cause of failure and  
abnormal elimination

**05**

Cautions

**06**

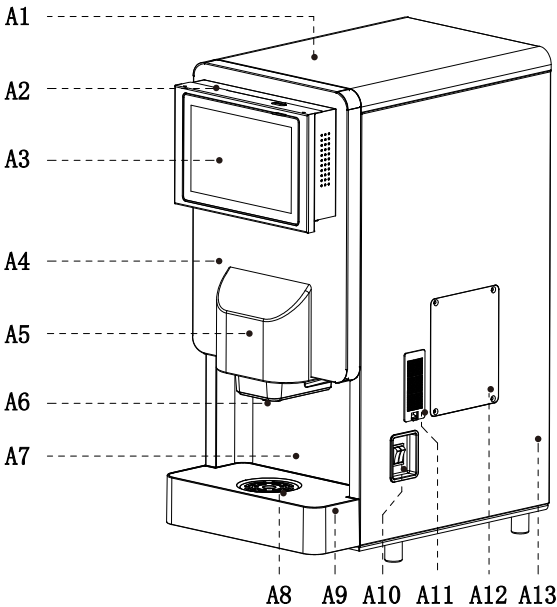
Cautions

**07**

Model, function table

**08**

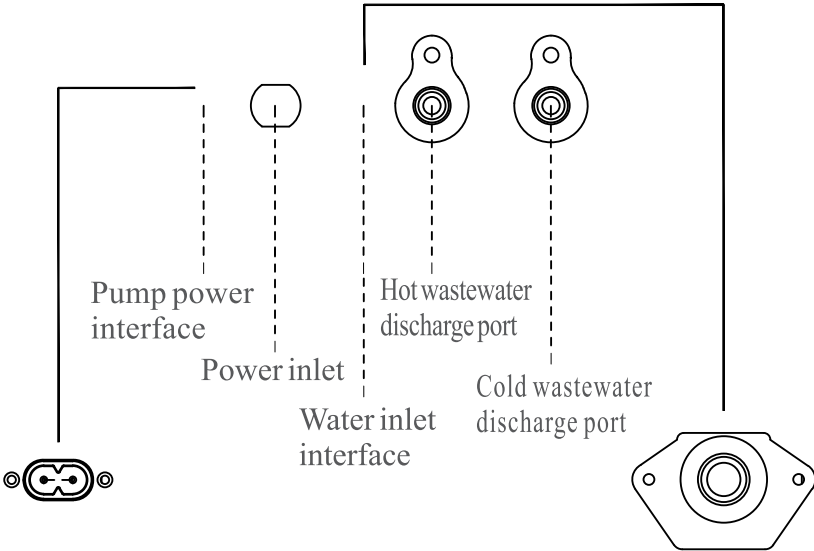
Product structure



A1	Top Cover	A6	Water outlet	A11	Suction hood
A2	Panel cover	A7	Bottom plate	A12	Maintenance port
A3	Display screen unlocking	A8	Cover of water holder	A13	Side plate
A4	Door frame	A9	Water Receiver		
A5	Water outlet decoration	A10	Start switch		

Basic information

Model	KVAA4	Power supply	220V/50Hz
Heater Power	2200W	Quantity of barrels	4
Cooler Power	180W	Barrel capacity	1000g
Keypress method	Touch-type ammonium key	Water supply mode	bottom/pipeline
Touch screen size	10.1 inch		



Installation notes

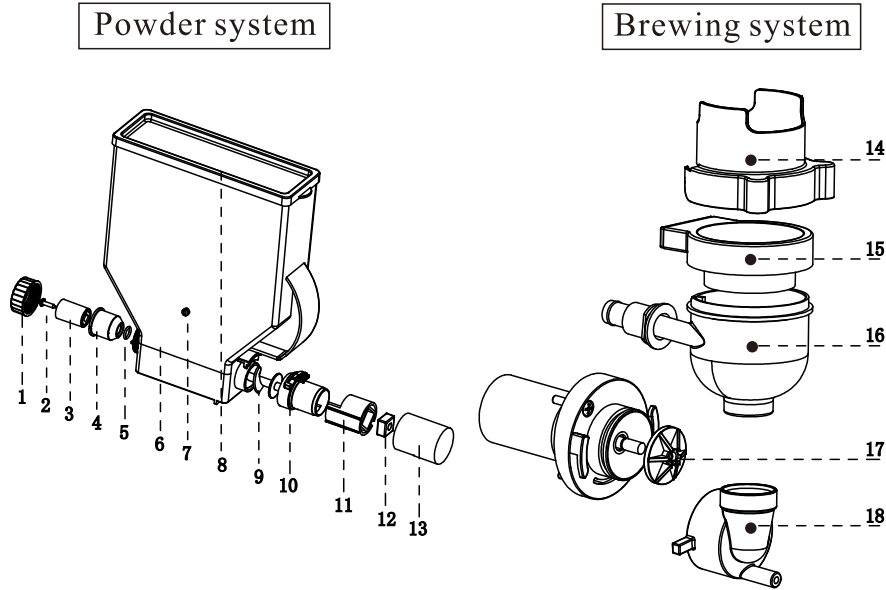
1. Open the packaging
- Warning: Please do not give children foam, charter bags and other packaging materials to play with to avoid harm.
- Note: Please remove all packaging materials before use to avoid causing abnormal operation of the machine.

2. Installation location and space requirements
- This product should be used in a place with clean and circulating air, and must be kept away from heat sources.
- It is not suitable to be placed used under direct sunlight or in the open air under rainy conditions.
- The product's operating temperature range: 3-35°C. Ensure that there are no other objects blocking or covering the product.
- The product must be left with sufficient space around it to ensure good ventilation and heat dissipation, as shown in the figure below.

position	front	behind	Left side	With side	Above
Distance (cm)	≥50cm	≥20cm	≥20cm	≥20cm	≥50cm

Cleaning and maintenance

Fault cause and abnormal elimination,  
see the table below for details



Faultphenomenon	Check item	Possible reasons	Solution method
E01	Hot probe	Check whether the hot probe is installed in place	Is the hot probe wire installed in place?
E02	Cold probe	Check whether the cold probe is installed in place	Is the cold probe wire installed in place?
E03	Tank (float ball)	Check if the water tank is leaking	Is the float ball working normally?
E06	Motor	Check if the motor is turning	Is the stirring cup blocked?

Cleaning and maintenance

Note: Please unplug the power cord before cleaning and maintenance. Do not use alcohol to clean the beverage machine to avoid cracking of plastic parts

- 1. The powder system should be disassembled and cleaned once every 3-6 months, as shown in the above diagram.
- 2. The system should be disassembled and cleaned once a month, as shown in the above diagram.

1	Fixed nut	7	Feeding wheel pin	13	Flour outlet cover
2	Self-tapping screw	8	Material box lid	14	Flour inlet
3	Drive rod	9	Feeding rod	15	Air inlet
4	Positioning ring	10	Powder outlet	16	Water cup
5	Feeding rod O-ring	11	Locking part	17	Stirring
6	Material box	12	Transmission silicone belt	18	Stirring cup



## ! PRECAUTIONS FOR USE



Please use a power source with a rated voltage of 220V. It is strongly recommended to use a dedicated 15AMP circuit. the plug is found to be loose, do not insert the plug to avoid electric shock or fire.



Do not place the machine in a damp environment, otherwise it will affect the electrical performance, and may also cause electric shock or fire. It is strictly to place the product in a place where it is easy to be splashed by water, and it is not allowed to clean it with water.



Before maintenance, disconnect the power supply of the machine. Otherwise, it may cause electric shock or death. When replacing the fuse, please turn off the first, then unplug the plug, otherwise it will cause electric shock.



When placing the bucket, avoid dripping water on the machine's surface and inside to prevent electric shock or fire.



When the machine is idle for a long time, please unplug the power plug to avoid the risk of overheating.



Do not disassemble or install this machine without permission. If necessary, it must be replaced by professional personnel dispatched by the manufacturer, local maintenance department or point.



If you hear any abnormal noise or smell any strange odor, please immediately turn off the power and contact your local dealer or after-sales service center



Please do not place the machine close to the wall to avoid affecting the machine's exhaust ventilation, which can easily cause the raw material powder to condense blocks.



Do not apply pressure to the functional control parts under the machine, so as not to affect the normal operation of the machine.



Do not use other forms of raw materials, if other particles or viscous raw materials, such as kernels, tea leaves, thick soup, etc., used, it may cause blockage of the connecting pipe.



When the machine is idle, turn off the power and unplug the power cord to avoid circuit failure problems.



The power cord must be plugged into a 3-pin grounded wall socket and must be grounded according to national safety regulations.



The appliance must not be immersed in water.



Before cleaning this product, make sure to cut off the power supply first, and only use mild detergent or glass cleaner to clean the product. It is forbidden to use irritating cleaning agents or solvents. Use a soft cloth to wipe the surface of this machine.



Do not place the product in a place where it is easily splashed by water, and do not clean it with water. Before using this machine, sure to remove all packaging materials and check that the machine is in good condition and undamaged.



This product is for adult use only. If you have physical sensory, intellectual defects, or lack of experience and common sense (including children), it must used under the sufficient care and guidance of your guardian. Do not let children operate or play with it.



This machine is for indoor use only, to avoid personal injury or death from electric shock. Do not operate this machine with wet hands or while standing on damp/slippery surface.



Do not allow the machine to approach heat sources and direct sunlight.



Do not allow power cords to come into contact with heating/surfaces.



The working temperature of this appliance is 0~38°C. To ensure good insulation protection, avoid the pipeline from freezing. When the pipeline is, it is strictly prohibited to use hot water to thaw when the appliance is placed in a room with a higher ambient temperature.



This utensil uses instant food, and when changing and adding instant food, gloves that meet sanitary requirements must be used to avoid contaminating the food



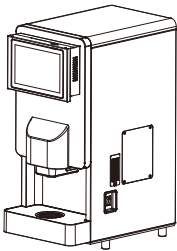
When using the bottom-mounted connection to the water supply, you must use the new pipe provided with it, and it is strictly forbidden to use pipes that not meet food requirements.



Do not unplug the grounding plug of the power cord under normal conditions without any accidents or external force environmental hazards.



Do not remove any grounding wires from individual components unless disassembling, replacing parts, or performing maintenance. All grounding wires must be replaced when replacing parts

Model	Picture	Functional configuration
KVAA4		4 Powder tank Cold and hot version Touch screen.