

TRAY WASHING MACHINE

CONTENTS

| | | |
|----------|---|----------------|
| A | GENERAL INFORMATION..... | Page2 |
| A1 | DESCRIPTION..... | Page3 |
| A2 | TECHNICAL INFORMATION..... | Page3 |
| A3 | TRANSPORTATION..... | Page4 |
| A4 | PACKAGE | Page 4 |
| B | INSTALLATION..... | Page4 |
| C | GENERAL WARNINGS..... | Page 5 |
| D | USING THE DEVICE | Page 6 |
| E | CLEANING and MAINTENANCE..... | Page 7 |
| F | TROUBLESHOOTING..... | Page 8 |
| G | SPARE PARTS LIST - DISASSEMBLED VIEW | Page 9 |
| H | ELECTRICAL CIRCUIT DIAGRAM..... | Page 12 |

TRAY WASHING MACHINE

A GENERAL INFORMATION

PLEASE READ THE OPERATING AND MAINTENANCE INSTRUCTIONS CAREFULLY BEFORE INSTALLING THIS DEVICE. IMPROPER INSTALLATION AND REPLACEMENT OF PARTS MAY DAMAGE THE PRODUCT OR CAUSE INJURY TO PERSONS. OUR COMPANY IS NOT RESPONSIBLE FOR INTENTIONAL DAMAGE TO THE DEVICE, DAMAGES CAUSED BY NEGLIGENCE, FAILURE TO COMPLY WITH THE INSTRUCTIONS AND REGULATIONS, OR INCORRECT CONNECTIONS. UNAUTHORIZED INTERFERENCE WITH THE DEVICE WILL VOID THE PRODUCT WARRANTY.

1. Keep this booklet handy in a safe place for future reference to other operators.
2. **The installation of the device must be carried out by authorized personnel in accordance with the current regulations and instructions in the country where it will be used.**
3. This device must be used by trained persons.
4. In case of device malfunction, turn off the device. Only a service center authorized by the manufacturer should service the device. Ask for original spare parts.

TRAY WASHING MACHINE

A1 DESCRIPTION

*This high-efficiency device is a professional dishwasher produced for use in industrial kitchens.

| Code | Dimensions (mm) | Weight (kg) | Packaging Dimensions (mm) |
|-------------|------------------------|--------------------|----------------------------------|
| TWME64 | 785x1380x1277 | 142 | 815x1050x1400 |

A2 TECHNICAL INFORMATION

| Code | TWME64 |
|--|---------------|
| Capacity (Plate/Hour) | 360 |
| Water Consumption (Lt /time) | 1.5L |
| Total Power (Kw) | 3 |
| Engine Power (Kw) | 0.55 |
| Operating Voltage (V) | 380 |
| Water Pressure (bar) | 4-6 |
| Tank Heating Power (Kw) | 2.1 |
| Cable Cross Section (mm²) | 5x4 |
| Fuse Selection (A) | 32 |

TRAY WASHING MACHINE

A3 TRANSPORT

*This device cannot be handheld. Therefore, use a lifting vehicle (forklift or pallet truck) to transport the device. (The lifting arms of the forklift or pallet truck must reach more than half of the bottom of the device).

OPENING THE A4 PACKAGE

*The device must be opened and its packaging must be destroyed in accordance with the regulations in the country of use. Food contact parts are stainless steel. All plastic parts are marked with the symbol of the material.

*Check that the parts of the device are complete and that there is no damage during transportation.


B ASSEMBLY

*Place the product on a flat and solid ground, take necessary precautions against risks of tipping over.

*The personnel who will provide installation and service to the device must be experts in their field and have an installation-service license issued by our company.

*Connection to the electrical power source must be made by an authorized person.

*Make sure that the voltage you connect the device to is the same as the voltage value written on the device label.

 grounding connection of the device must be made in accordance with standards and safety rules.

*The grounding of the device must be connected to the grounding line of the electrical installation on the nearest panel.

*The device's electrical connection, main fuse and residual current fuse must be made in accordance with the current regulations and rules.

TRAY WASHING MACHINE

C GENERAL WARNINGS



*Do not use the device in facilities without adequate lighting.



*Do not touch any moving parts while using the device.



*Do not install the device near flammable or explosive materials.



*Do not operate the device idle.



*Do not load too much below or above the capacity of the device.



*Do not intervene in the device without using appropriate protective equipment.



*In case of a fire or flash of flame for any reason in the area where the device is used, immediately turn off the gas valves and electrical switches (if any) and use a fire extinguisher. Never use water to extinguish the flame.



*Damages caused by lack of grounding connection will not be covered by the warranty.



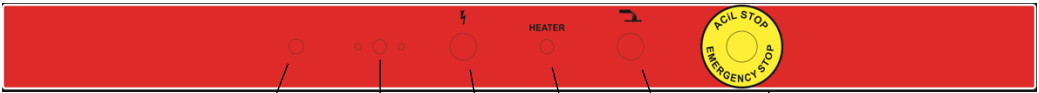
*Do not wash decorated dishes. Prevent silverware from coming into contact with other metals.



*The device should be operated under a hood. Otherwise, hot water vapor and excessive humidity emanating from other devices while the device is operating or in the environment may damage the mechanical and electrical parts of the device. The relative humidity in the environment where the device operates should not be more than 65% .

TRAY WASHING MACHINE

D USE OF THE DEVICE



*Control Panel:

A B C D E F

- A : Device on Lamp
- B : On/Off Switch (first water intake)
- C : Washing Button
- D : Water heated lamp
- E : Water drain button (On-Off Switch must be turned off)
- F : Emergency Stop

*Use of:

- Change the water in the water tank at least twice a day.
- Open the water supply valve and plug the device into the socket.
- dishes to remove any industrial waste left in the tank and pipes .
- When the device is in "Water Receiving" position; Water starts to enter the boiler of the device, and when the water inlet is completed, the boiler resistance is activated to heat the water in the boiler. Once the heating process is completed, the "Water Heated Lamp" of the device will turn on.
- After the washing process of the device is completed, it will automatically switch to rinsing. (Do not open the lid before the rinsing process is completed).

TRAY WASHING MACHINE

E CLEANING and MAINTENANCE

➤ What to Do After Each Use:

- While cleaning the device, make sure that the plug is not plugged in or the switch is off.
- After each washing process, remove the water drain plug inside the machine and drain the water.
- Do not use acid or similar materials when cleaning the device.
- While cleaning the device, do not wash the device with water. Otherwise, water will leak into the electrical installation and cause it to burn.

➤ Things to Do Periodically:

- Maintenance should only be performed by trained people.
- the hood open whenever the device is not in use .
- Clean the filters in the device once a week. After cleaning, make sure that the strainer is fully seated and tightened.
- Disassemble and clean the rinse compartments (sprinklers) of the device every 15 days.
- Clean the machine's drain plug and drain hose every 15 days.

F TROUBLESHOOTING

| | |
|------------------------------------|---|
| THE TRAY IS NOT WASHED WELL | <ol style="list-style-type: none">1. Depending on the pollution of the water, drain the water and try again .2. Clean the rinse compartments.3. If the brushes are deformed due to use, they should be replaced with a new brush by technical service intervention. |
|------------------------------------|---|

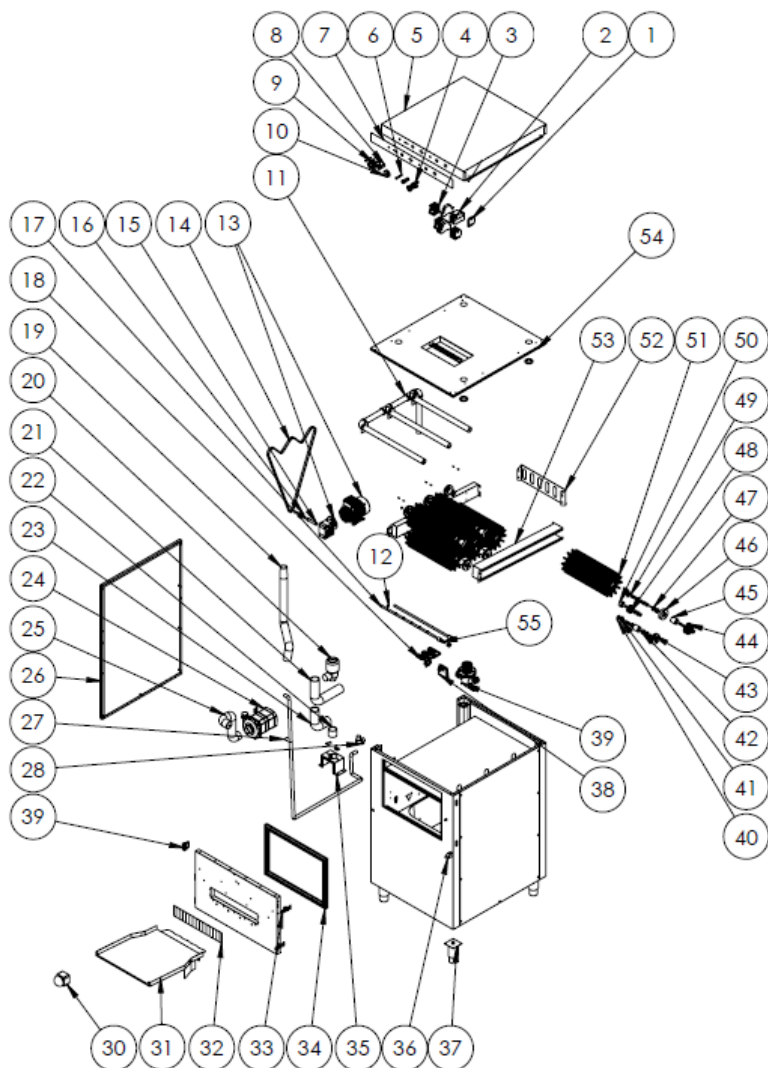
| | |
|------------------------|---|
| IN TRAYS STAINS | <ol style="list-style-type: none">1. It should be washed with water only. The product should not be placed in the machine other than water. |
|------------------------|---|

| |
|---|
| <ul style="list-style-type: none">• If tray washing is not done with appropriate quality,• If any of the security functions are not working,<ul style="list-style-type: none">➤ Do not use the device. |
|---|

***If the above problems still persist, contact our authorized services.**

TRAY WASHING MACHINE

G SPARE PARTS LIST - DISASSEMBLED VIEW



TWME64

TRAY WASHING MACHINE

G SPARE PARTS LIST - DISASSEMBLED VIEW

| NO | PART CODE | PART CODE |
|----|---------------------------|---|
| 1 | M.ELK-KLM-037 | AVK 10x10 MM RAIL TERMINAL (RED) |
| 2 | ERK.M.ELK-SLT-MK-006 | SCHNEIDER ENGINE PROTECTION SWITCH |
| 3 | ERK.M.ELK-KNT-KNT-021 | Schneider LC1K09 01p7 230v (CONTACTOR) |
| 4 | M.ELK-SLT-BTL-006 | LOCKED EMERGENCY STOP-B200E |
| 5 | YSC-ERS.TYM-LZ-0073 | EMP.TYM.02 PANEL CLOSING SHEET |
| 6 | M.ELK-LMB-SNY-003 | AN-EL - SOCKET WARNING LAMP - YELLOW (S19,Q10,08-3MM) |
| 7 | M.AKS-ETK-LKS-ERS-TYM-002 | EMP.TYM.02 LABEL |
| 8 | M.ELK-SLT-BTL-011 | 19 MM PERMANENT 220V GREEN LIGHT METAL BUTTON (IMPORTED) |
| 9 | M.ELK-SLT-PKO-001 | FIVE STAGE SWITCH (YK2Ö 115 K16)(MTX080) |
| 10 | M.ENJ-ERS-PLS-PS-018 | OVEN BUTTON METAL |
| 11 | ARA-ERS.TYM-0001 | EMP.TYM.02 WATER INLET PIPE INSTALLATION MNTJ |
| 12 | YTL-ERS.BYM-KS-0044 | EMP.2000 RINSE COMPARTMENT |
| 13 | M.ELK-MTR-RLM-039 | 0.25 KW 187 D-D S30 ELK -REDUCER COMPACT ELK MOTOR (FOR TYM.02) |
| 14 | M.KYS-TKY-011 | 5M.1800 EN.15 DOUBLE SIDED TIMING BELT |
| 15 | YTL-ERS.TYM-KS-0016 | EMP.TYM.02 REDUCER SHAFT |
| 16 | M.MUH-KSN-014 | 5M.15.20F-AL TIMING PULLEY (EMP.TYM.01) |
| 17 | YBR-ERS.TYM-KS-0007 | EMP.TYM.02 RINSE THIN PIPE |
| 18 | M.ELK-RZS-BRU-BYM-034 | EMP.500-D NEW TANK RESISTANCE-230V-1750W |
| 19 | M.MEK-TES-HRT-111 | EMP.TYM.02 SPRAY PUMP HOSE |
| 20 | M.ELK-MTR-PMP-014 | SYK.01 MÜLLER DISCHARGE VALVE IMPORTED |
| 21 | M.MEK-TES-HRT-061 | EMP.SYK.01 BOILER DRAIN HOSE LOWER |
| 22 | YBR-ERS.SYK-KS-0012 | EMP.TYM.02 COIL CHROME 11-2" 304 QUALITY |
| 23 | M.MEK-TES-HRT-061 | EMP.TYM.02 BOILER DRAIN HOSE LOWER |
| 24 | M.ELK-MTR-PMP-001 | L71.17 Pump 0,7HP 230V 50HZ M INS.CL. DISH WASHING MOTOR IMPORTED |
| 25 | M.MEK-TES-HRT-109 | EMP.TYM.02 ENGINE BOILER CONNECTION HOSE |
| 26 | YSC-ERS.TYM-LZ-0046 | EMP.TYM.02 SIDE COVER SC |
| 27 | M.MEK-TES-HRT-112 | EMP.TYM.02 RINSE HOSE |
| 28 | M.ELK-SLN-PLS-001 | BYM VALVE-SINGLE PORT |
| NO | PARÇA KODU | TRACK NAME |
| 29 | M.AKS-MNT-MTL-001 | BED METAL HINGE CODE 100 1 2 05 BLADE STERILIZED)-1 |
| 30 | M.ELK-SLT-BTL-016 | TYM.02 RED PRESSURE MUSHROOM BUTTON |
| 31 | YSC-ERS.TYM-LZ-0042 | EMP.TYM.02 TRAY WATER DRAIN SC-FLAT |
| 32 | M.CNT-ERS-052 | EMP.TYM.02 CURTAIN |
| 33 | M.AKS-KLT-GNL-002 | EMP.3003 COVER LATCH BOTTOM |

TRAY WASHING MACHINE

| | | |
|----|-----------------------|---|
| 34 | M.CNT-ERS-TYM-001 | EMP.TYM.02 DOOR SEAL (55 SHORE) |
| 35 | YSC-ERS.TYM-LZ-0056 | EMP.TYM.02 WATER DRAIN PUMP STAND SC |
| 36 | M.ENJ-ERK-PLS-133 | BANKET COVER REST Wedge 12H NEW |
| 37 | ERS.M.AKS-AYK-INX-001 | 15 CM INOX PIPE FOOT (IMPORTED) |
| 38 | M.ENJ-ERS-PLS-BYM-019 | BYM AIR TRAP |
| 39 | M.ENJ-ERS-PLS-BYM-088 | EMP.500-D FILTER BODY+AIR TRAP |
| 40 | YSC-ERS.TYM-LZ-0077 | TYM.02 BRUSH CONNECTION BACK PLATE |
| 41 | YSC-ERS.TYM-LZ-0013 | EMP.TYM.01 BRUSH INNER SHEET |
| 42 | YTL-ERS.TYM-KS-0010 | EMP.TYM.02 BRUSH MOVING LONG PIECE - LEFT |
| 43 | YTL-ERS.TYM-KS-0007 | EMP.TYM.02 BRUSH BED Ø70-20 mm |
| 44 | M.MUH-KSN-012 | 5M.15.40F-AL TIMING PULLEY (EMP.TYM.01) |
| 45 | YTL-ERS.TYM-KS-0011 | EMP.TYM.02 BRUSH MOVING LONG PIECE |
| 46 | YTL-ERS.TYM-KS-0008 | EMP.TYM.02 BRUSH BED Ø70-23 mm |
| 47 | M.RLM-NRM-058 | 6001 ZZ BEARING 12X28X8 |
| 48 | M.MUH-KSN-013 | 5M.15.26F TIMING PULLEY (EMP.TYM.01) |
| 49 | YTL-ERS.TYM-KS-0005 | EMP.TYM.01 BRUSH MOVABLE SHORT PIECE INNER SQUARE 12X12 38 MM |
| 50 | YTL-ERS.TYM-KS-0012 | EMP.TYM.02 WASHING BRUSH TURNING THREAD PIN |
| 51 | M.MUH-ERS-TYM-002 | EMP.TYM.02 WASHING BRUSH |
| 52 | YSC-ERS.TYM-LZ-0071 | EMP.TYM.02 BRUSH-TRAY SUPPORT SHEET |
| 53 | YSC-ERS.TYM-LZ-0051 | RIGHT SIDE BALANCE SC NEW |
| 54 | YSC-ERS.TYM-LZ-0044 | EMP.TYM.02 TOP CAP SC |
| 55 | YTL-ERS.BYM-KS-0028 | EMP.1000 RINSE ARM CONNECTION |



GGM Gastro International GmbH
Weinerpark 16
D-48607 Ochtrup

www.ggmgastro.com

info@ggmgastro.com

+49 2553 7220 0