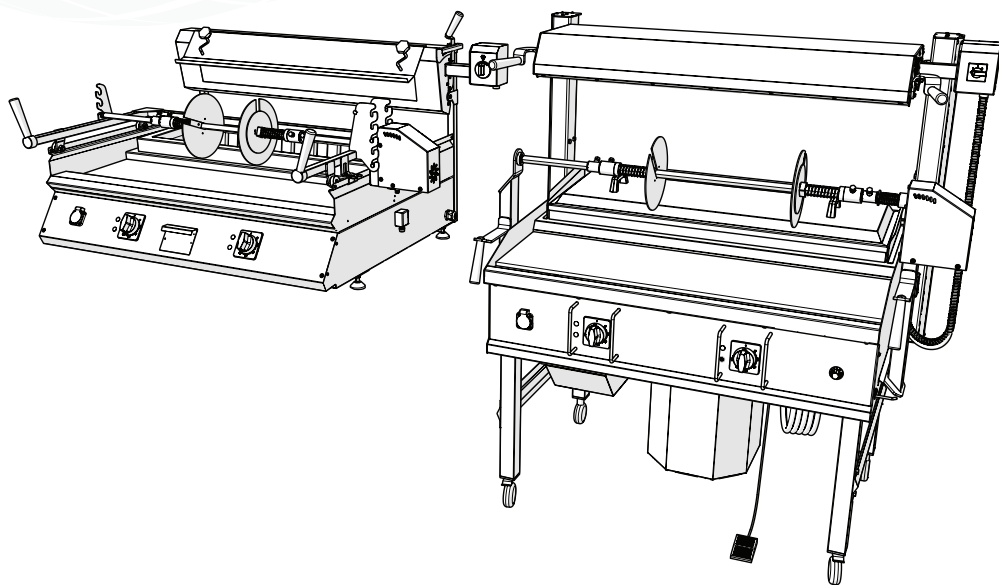


# **HORIZONTAL KEBAB MACHINE USER MANUAL**

Please read it before running.  
There are important explanations for you.

KBHAT - KBHAT1



# INDEX

Technical Information Tables .....	3
General Warnings and Safety Precautions.....	4
Setup .....	6
Manual Model Operation and Operation.....	7
Preparation of Çağ Kebab .....	8
Basic and Technical Characteristics.....	9
Electrical Connections KBHAT1 .....	11
Electrical Connections KBHAT .....	15
Cleaning and Maintenance.....	17
Spare Parts List / KBHAT1.....	18



It is the social responsibility of individuals to deliver the product to valid collection points that recycle electricity or electronics when you want to dispose of it. In this way, by ensuring the correct disposal of the product, you will help prevent possible negative consequences for the environment and human health. Recycling of materials will help preserve natural resources. For more detailed information about the recycling of this product, please contact the municipality, the household waste disposal service or the store where you purchased the product.



The packaging materials of the product are made of recyclable materials in accordance with national environmental legislation. Do not dispose of packaging materials together with household waste or other waste. Take these materials to recycling points designated by local authorities.

**GENERAL INFORMATION**

Model	KBHAT1	KBHAT
Product Dimensions (mm)	1420 x 865 x 1530	1380 x 986 x 837
Net Weight(kg)	268	149
Cooking area(mm)	1140 x 300	1140 x 300
Meat Capacity(kg)	~85	~85
Meat Dimensions are Max.(mm)	Ø35x85	Ø35x85

**ELECTRICAL INFORMATION**

Voltage	380-415V	380-415V
Frequency	50-60 hz	50-60 hz
Electric power	9.8 Kw	9.6 Kw
Pulled Amps	44.5 A	43.6 A
Cable Cross Section	5x6 TTR	5x6 TTR
Protection class	IPX4	IPX4
Cable input	PG9-PG16-PG21	PG9-PG16-PG21

## General Warnings and Safety Precautions

Dear customer, We wish you to make the best use of your product, which has been carefully and thoroughly inspected and manufactured. We strongly recommend that you read this complete user manual before using the product. This guide will help you use the product quickly and safely.



The following safety instructions will help you avoid the risk of personal injury or damage to your product. If these instructions are not followed, the product will not be covered by the warranty and no responsibility for human health will be accepted.

- Be careful that flammable materials that can cause a fire are not located near the device.
- Keep your device in an environment with appropriate humidity and ventilate the room well. Use the hood to remove the steam and smoke generated during cooking.
- Installation and maintenance of the device, it should be done only by authorized personnel. Contact an authorized representative authorized by the manufacturer. Otherwise, your device will be out of warranty.
- Replace the broken parts of the device with the original spare parts. The manufacturer undertakes that the device can be used safely only when these parts are used.
- Children and uninformed people should not be allowed to use the device. It should be used by people trained in the risks associated with the device.
- Keep it under control while the device is running.
- Turn off the device in case of malfunction or incorrect operation.
- It is necessary to have a ground line and a leakage current relay on the supply line of the device.
- To clean the device, use chlorine (sodium hypochlorite, hydrochloric or muriatic acid, etc.) products containing (even diluted) do not use. Do not use metal tools to remove rust. First, wipe it with warm soapy water, and then with a dry cloth.
- Do not store flammable liquids near this device.
- Do not clean the appliance directly with water jets or water vapor.
- Do not allow dirt, oil, food or other waste to form deposits on the device, do regular cleaning.
- Make the electrical connection of the device via a fuse suitable for the values and fix the fuse in question in a place where you can easily access it. You can find the values from the label on the device or from the table inside the manual.
- The device's electricity must be strictly grounded; the device should not be connected when there is no ground line.
- The device is recommended to be checked by an authorized person. Please call a service for this purpose at least once a year.

## General Warnings and Safety Precautions



- Always follow the applicable safety instructions.
- Understanding the importance of the user manual, keep it within easy reach for future use and do not lose it.
- The manufacturer reserves the right to make changes to the product. It decisively indicates the differences between the models.

In case of any problems, please contact your authorized dealer.



It is a warning sign that indicates that attention should be paid to safe use.



Excessive temperature and this is a warning sign to act according to the environment.



It is a warning sign indicating a danger of electrical voltage.

- Stainless steel material is used in the device.
- The device is designed in accordance with the industrial type of use in accordance with the low voltage directive (LVD 2014/35ED).
- The device is designed in accordance with the electromagnetic compatibility directive (EMC2014/30EY) for industrial use.
- Your device is manufactured for use in industrial working environments; restaurants, restaurants, fastfood, canteens, tourist facilities, cafeterias, hotels and other environments where accommodation is made.

## Setup



-Always have the authorized service provider install the product and make electrical connections. The manufacturer is not responsible for any damage to the product caused by actions taken by unauthorized persons.

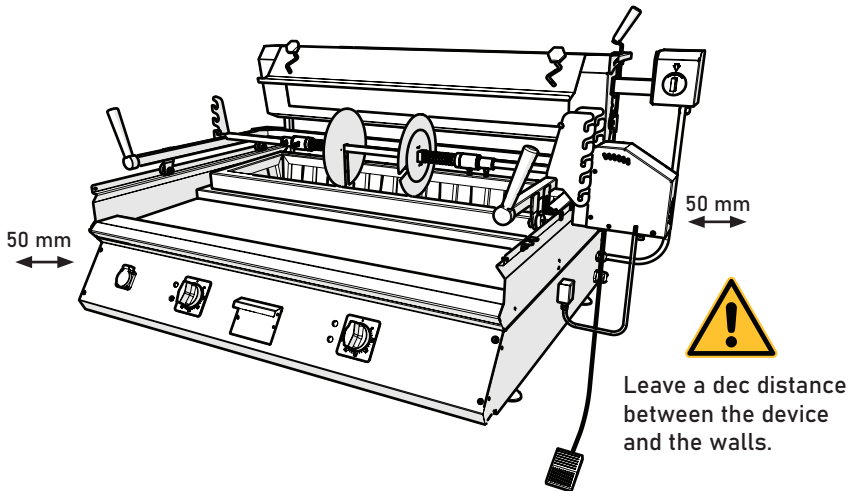
- Before installation, please note that the connection lines have been made correctly and completely. If the installation cannot be performed due to a malfunction caused by the absence of any; service fee it will be requested from the customer.



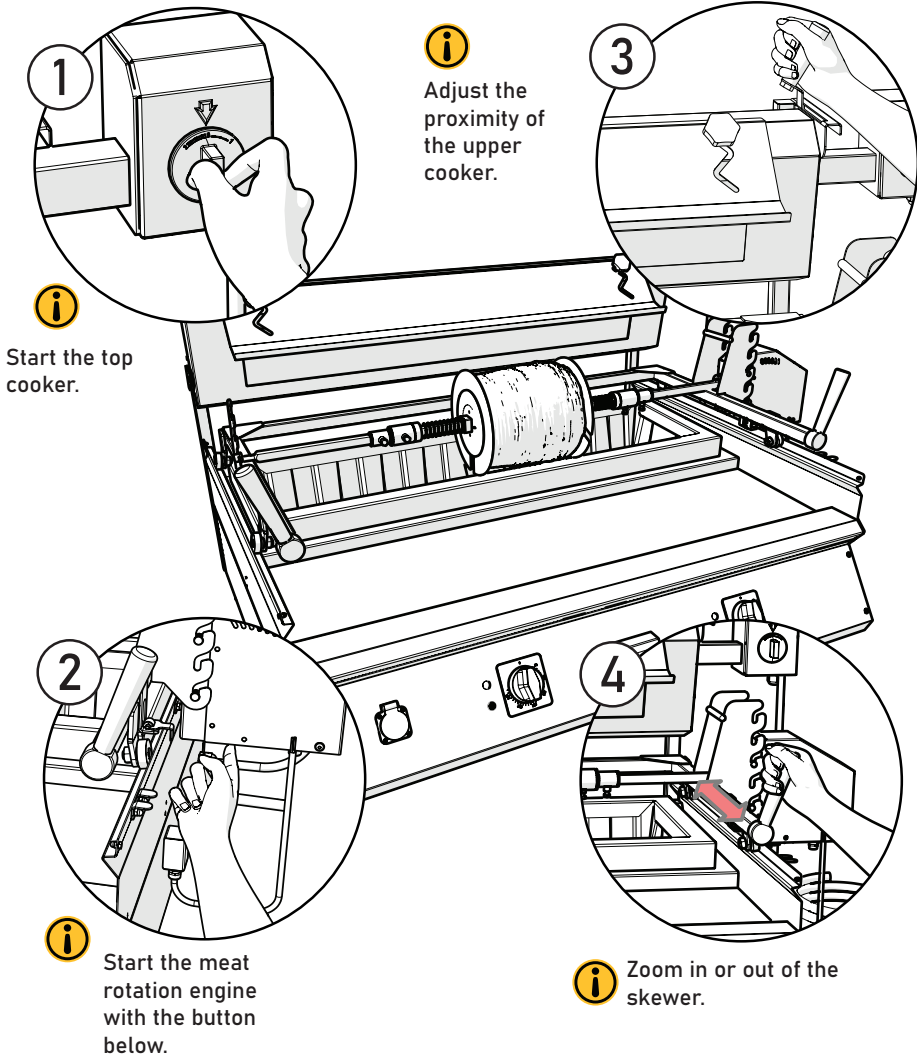
-Before starting the device for the first time, remove the protective nylon on the top of the device, and then wipe it with a damp and then dry cloth.

- Place it under the hood to eliminate smoke and odor that may occur during the cooking process.

-Children and uninformed people should not be allowed to use the device.

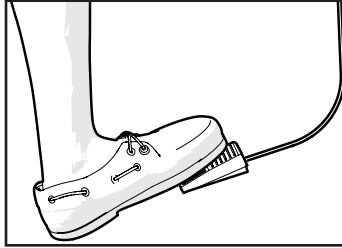


## Manual Model Operation and Operation

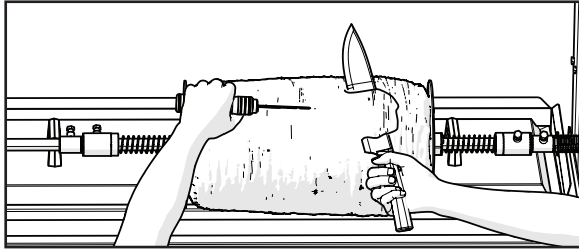


- Do not touch hot surfaces while the device is running.
- Do not touch the skewers before they cool down.

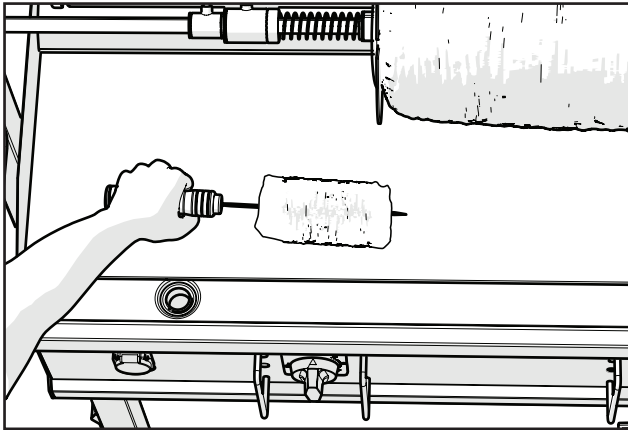
## Preparation of Çığ Kebab



By pressing the foot pedal, the rotating skewer is fixed.



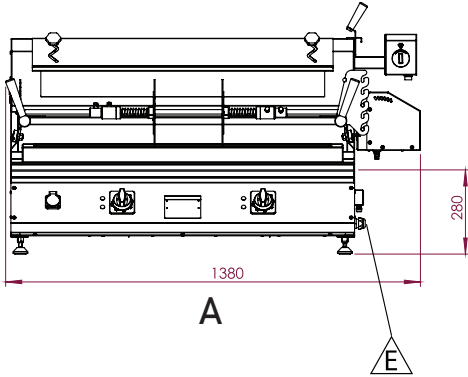
Skewers are dipped superficially on the meat. It is cut superficially.



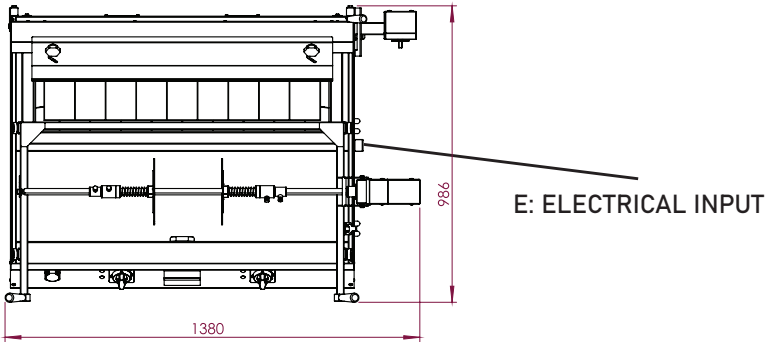
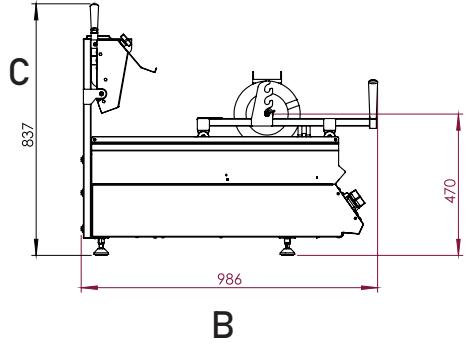
It is cooked or heated on the back surface of the meat.

# Basic and Technical Characteristics

FRONT

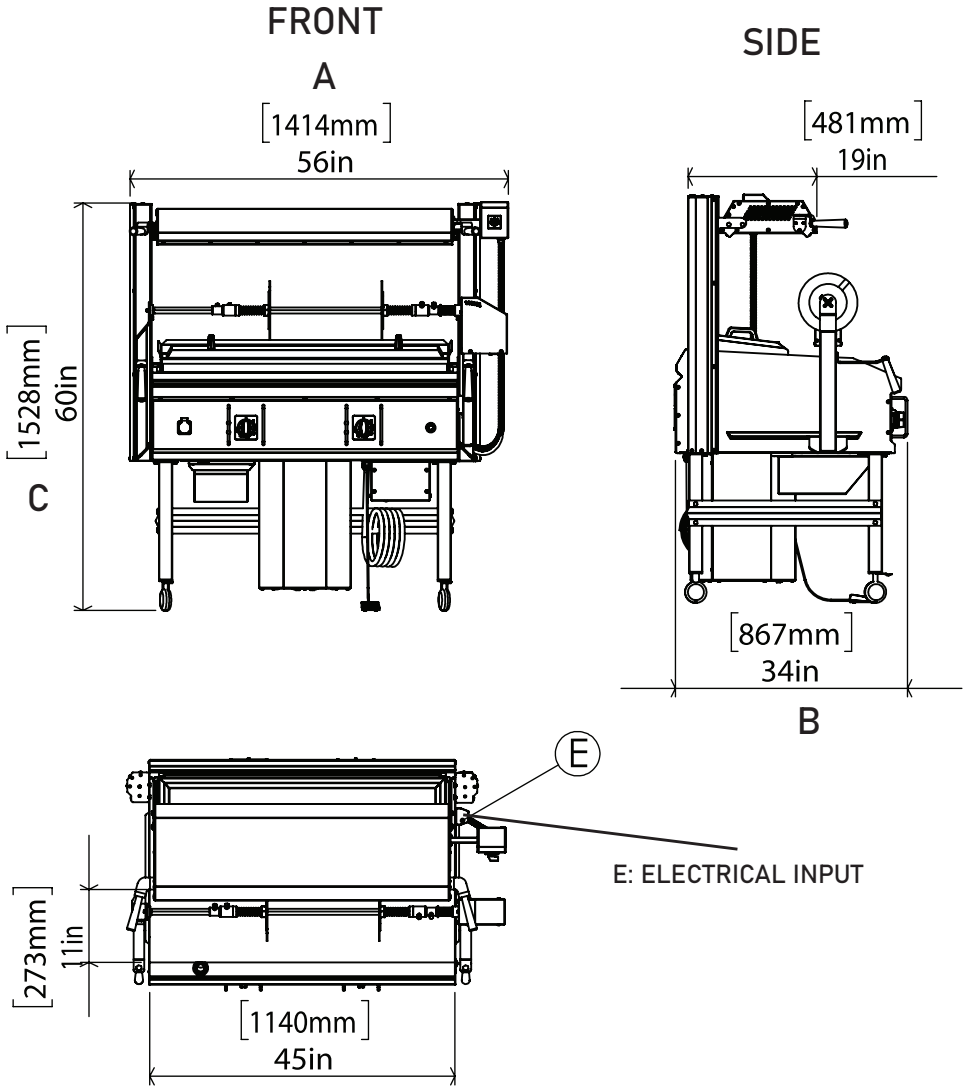


SIDE



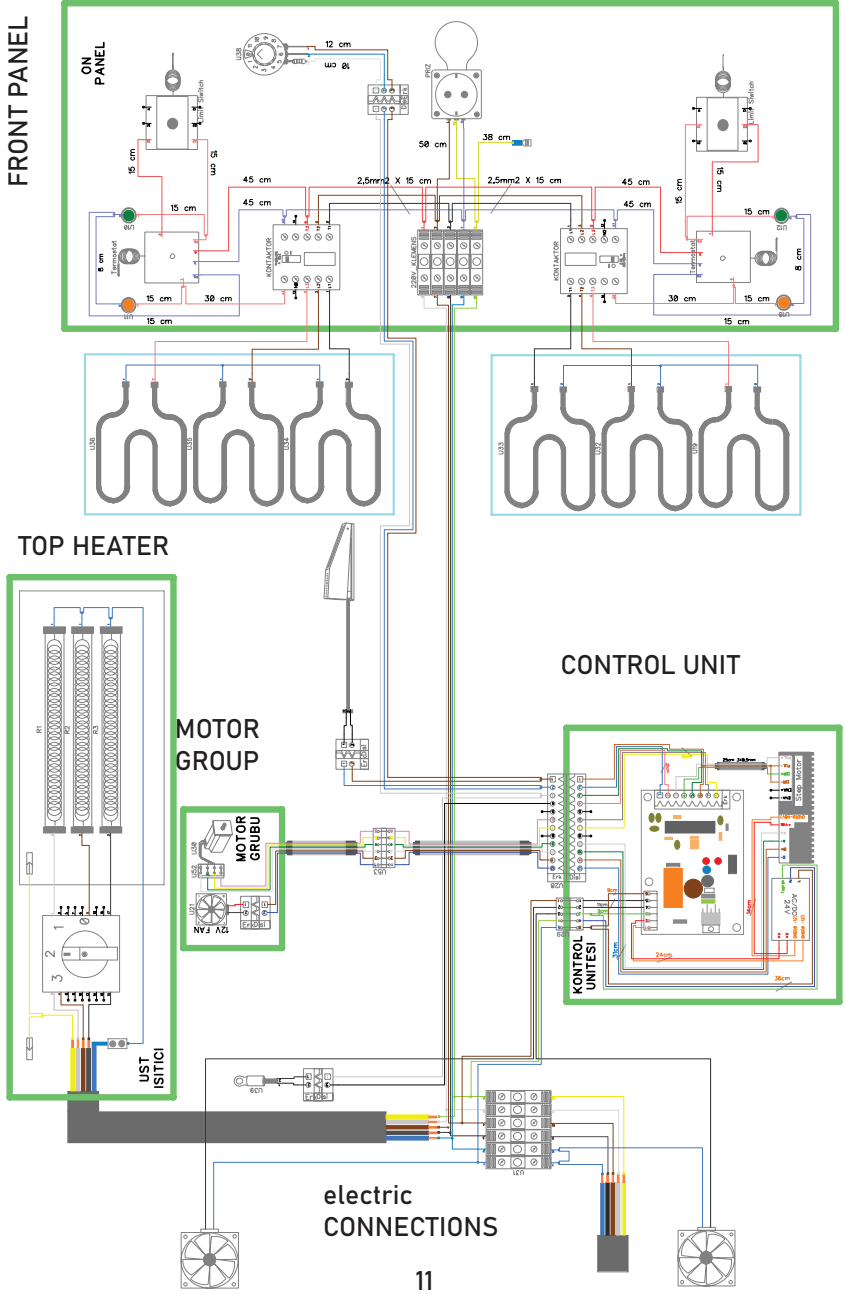
PRODUCT CODE	A	B	C
KBHAT	1380 mm	986 mm	837 mm

Basic and Technical Characteristics

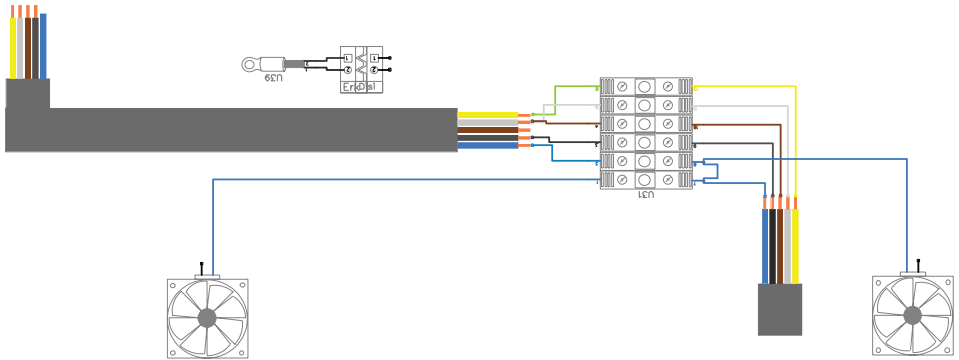


PRODUCT CODE	A	B	C
KBHAT1	1414 mm	867 mm	1528 mm

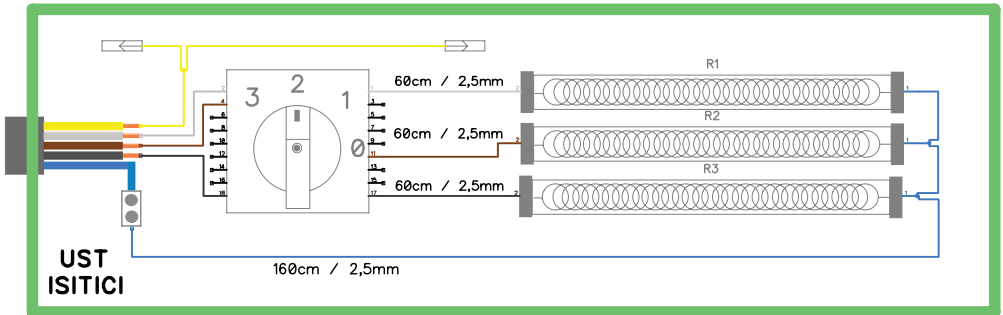
KBHAT1



electric  
CONNECTIONS

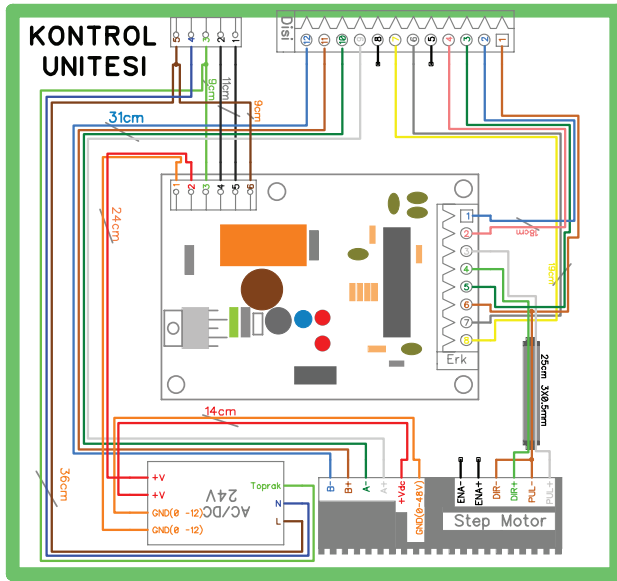


TOP HEATER

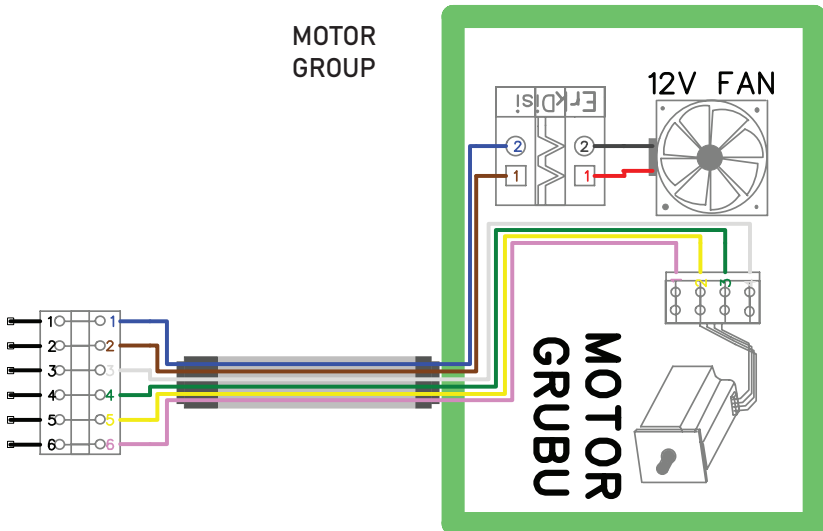


- The device must be connected to the electrical installation in accordance with the electrical standards of the country you are using.
- Make the ground line of the device through a suitable auto fuse and fix it in a place where you can easily access it. Connect the appropriate insurance to the values in the table.

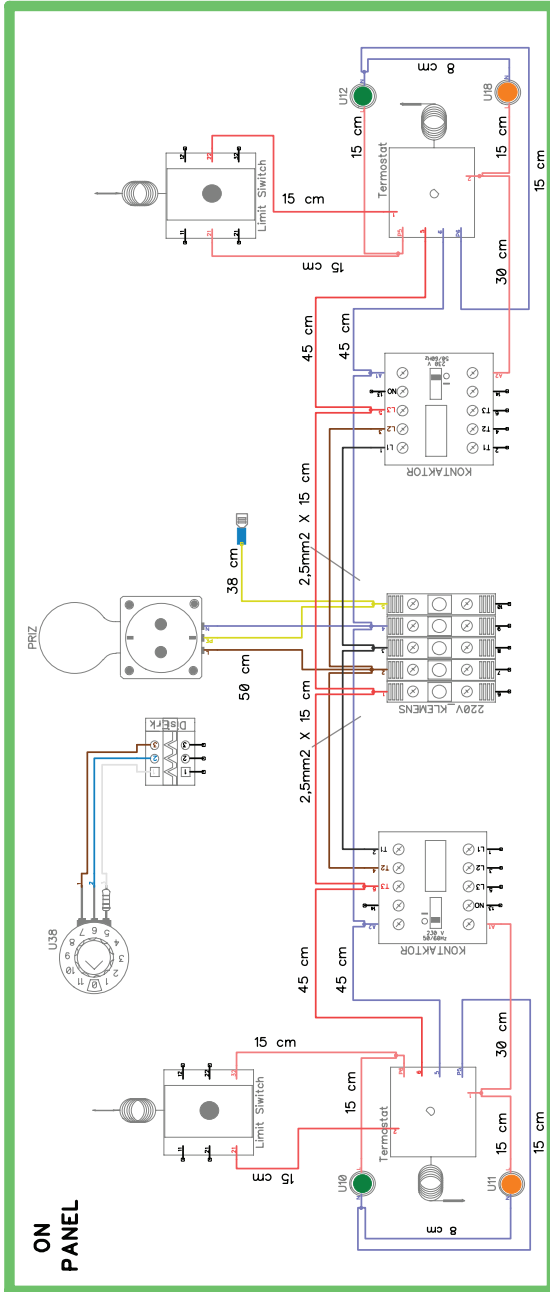
CONTROL UNIT

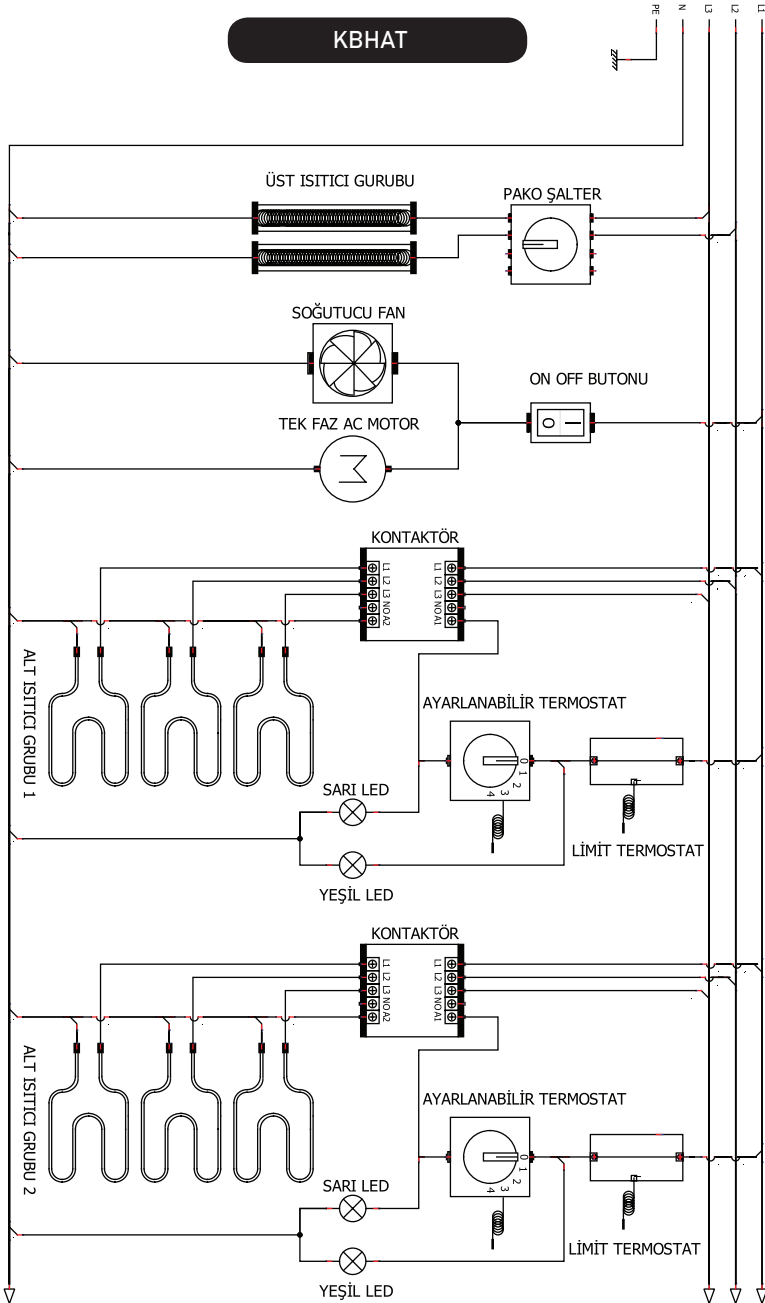


MOTOR GROUP



FRONT PANEL





## Electrical Technical Table and Information

Product Code	Power	Supply Voltage	Cable Cross Section H05RR - F	Frequency	Pulled Amps
KBHAT1	9.8	380-415V	5x6 TTR	50-60 hz	44.5 A
KBHAT	9.6	380-415V	5x6 TTR	50-60 hz	43.6 A



- The given cable cross-sectional values apply to the installation and this device.
- There must be a ground line and a leakage current relay in the electrical installation to be removed.
- The withdrawal of the electrical installation belongs to the customer.
- The cable must be pulled so that the electrical panel can be reached.
- If there is a risk of high voltage in the area where the device is located, it is recommended to have an energy-regulating regulator. Otherwise, the voltage that will come too high to the device will damage the resistors.

### What to look for before cleaning and maintenance.

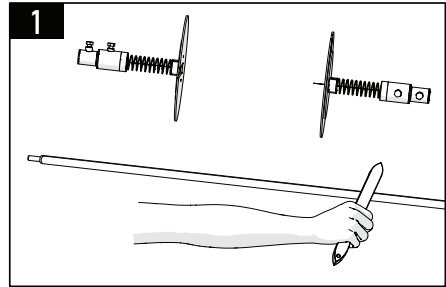


- Turn off the main supply electrical connection before cleaning the device. Wait for the device to cool down.
- Do not perform any maintenance while there is electricity on the device.
- Wipe the device with a cloth soaked in warm and soapy water.
- Absolutely no acid-containing chemicals should be used during cleaning on the stainless surface of the device.
- Never clean your device with pressurized water or pressurized steam. Otherwise, you may cause a failure of the resistance and electrical equipment.
- Do not leak water inside while cleaning the device.
- In case of a dangerous situation on the device, please inform the authorized service.
- Clean the waste accumulated in the cooking chamber of the device.
- For cleaning stainless steel, do not use general steel abrasives, scrubbing pads, brushes, or detergent products containing abrasives.

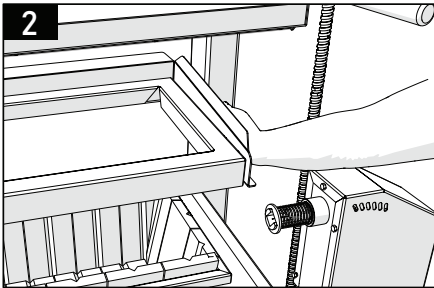
## Cleaning and Maintenance



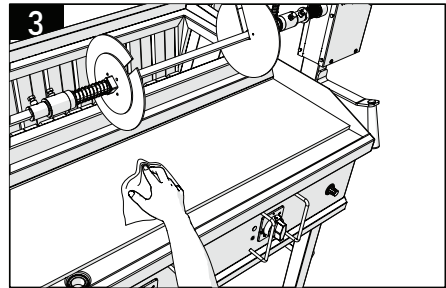
attention  
Do not clean the  
device before it  
cools down.



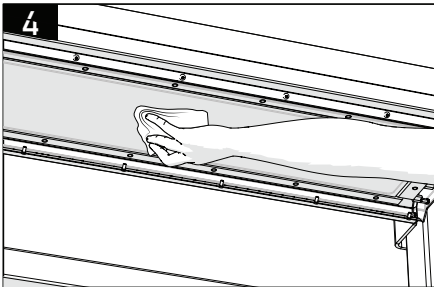
You can use a brush to clean the skewer.



Remove the parts on the coal bin.



Clean the grill.

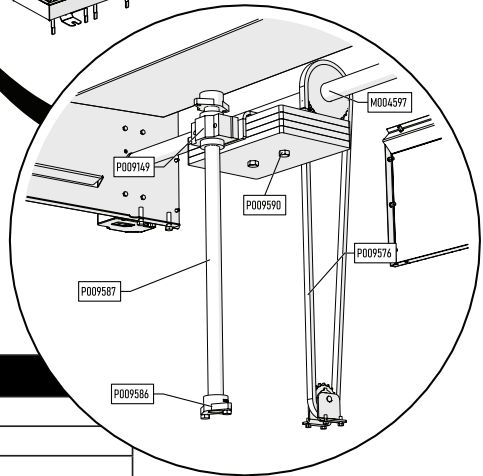
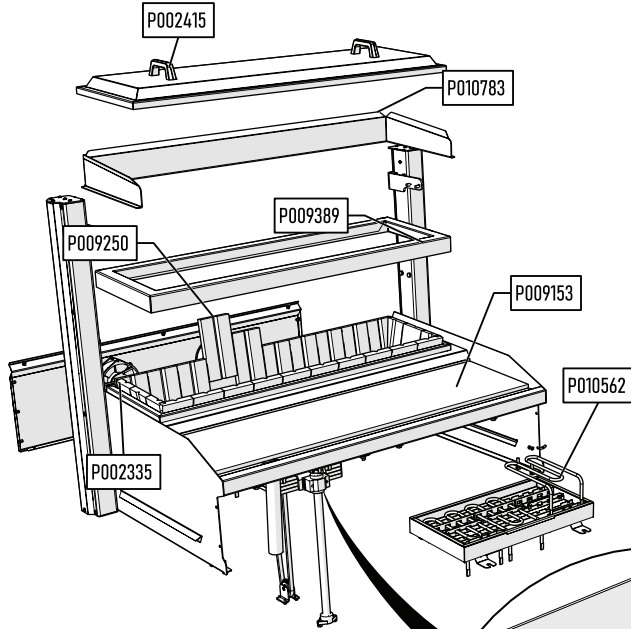


Clean the glass in front of the resistor  
with a damp cloth.



- Do not use abrasive chemicals or steel cleaning materials when cleaning.
- Do not contact the hot surface directly.

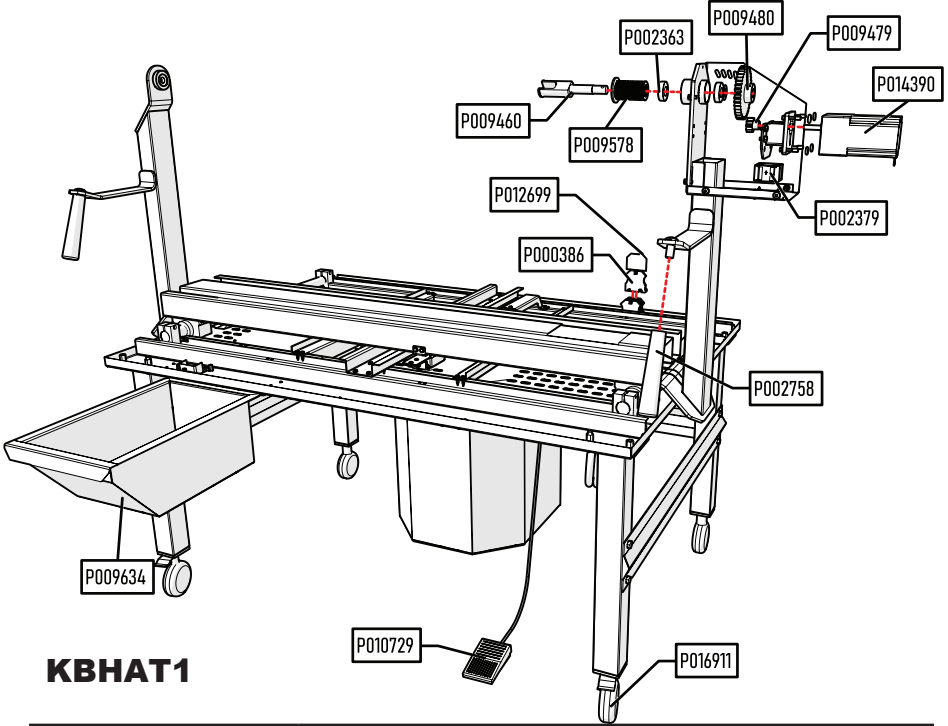
## Spare Parts List / KBHAT1



### KBHAT1

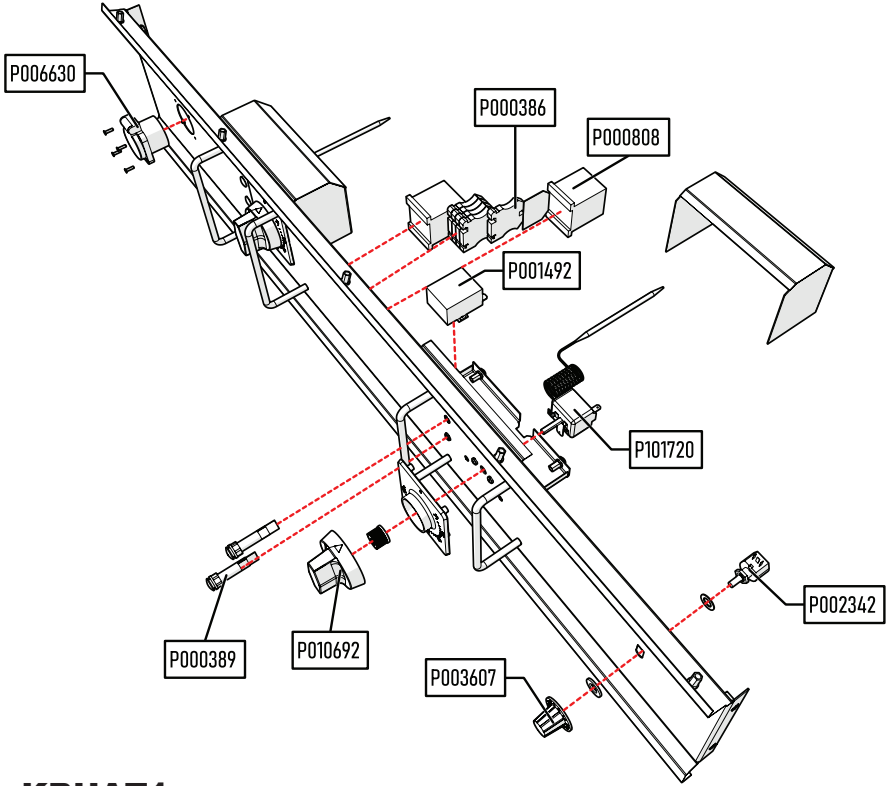
PART CODE	explanation
P002335	Fan type with 150x55 bearings
P002415	Bakelite handle
P009149	sce 25
P009153	How to make a shish kebab
P009250	Firestone 200x100x20
P009389	The framework of the Cağ kebab january group
M004597	Carrying Weight to the Gear Wheel
P009576	The weight of the cağ kebab is mek. chain 3/8" 1270mm
P009586	pitch 25
P009587	Q25 induction hardened chrome plated shaft
P009590	Cağ kebab weight sheets
P010562	Resistance -- Cağ kebab
P010783	Heat Preservation Sheet

## Spare Parts List / KBHAT1



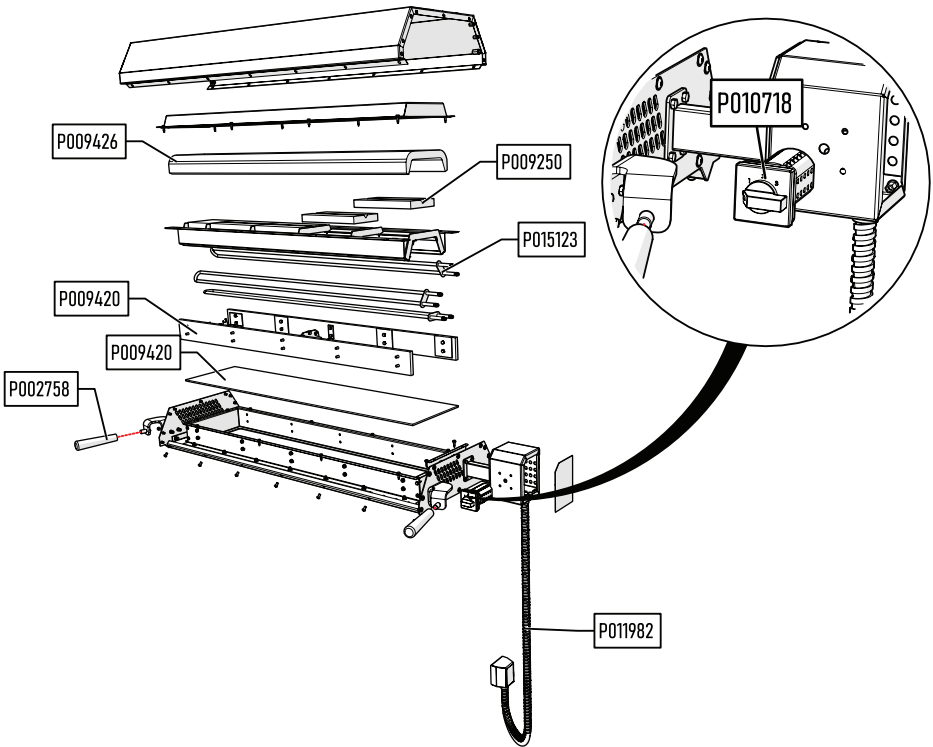
### KBHAT1

PART CODE	explanation
P000386	Klamens
P002363	Bearing ZZ Stainless
P002379	Axial fan 40x40x25
P002758	The handle is bakelite
P009460	Skewer Holder Parts
P009479	m2 d10 Spur gear
P009480	m2 d40 Spur gear
P009578	Cağ kebab rotary hanger group spring
P009634	Waste oil tank
P010729	Pedaling
P012699	Terminal Cover
P014390	stepper motor
P016911	Wheel



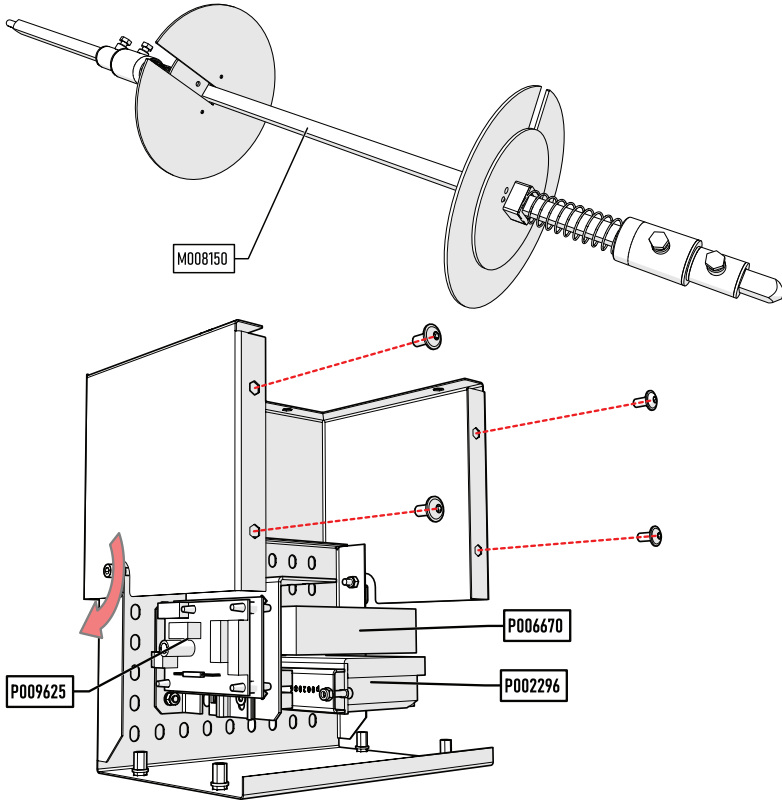
## KBHAT1

PART CODE	explanation
P000386	Klamens
P000389	Signal Lamp (Green)
P000808	Contactor
P001492	238°C Limiter
P002342	Potentiometer
P003607	Potentiometer Resistance indicator
P006630	Socket
P010692	Button 700 Black
P101720	190°C Thermostat



## KBHAT1

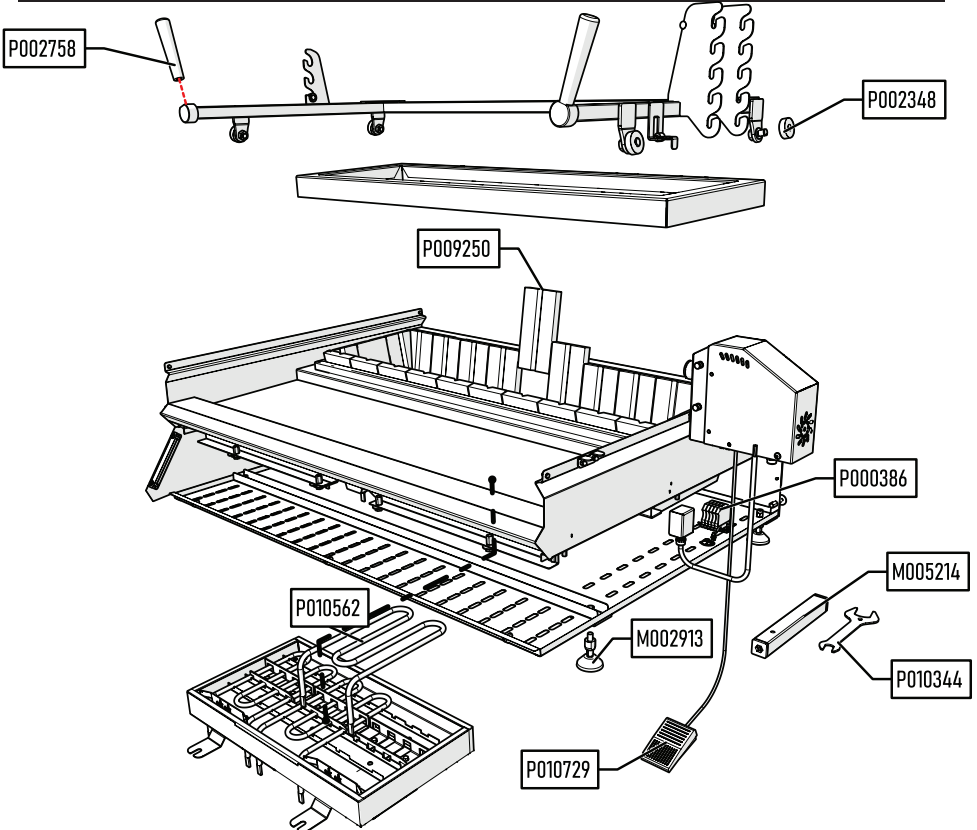
PART CODE	explanation
P002758	The handle is bakelite
P009250	Firestone 200x100x20
P009420	Insulation Material
P009426	Blanket insulation
P010718	Switch
P011982	Upper resistance energy cable sheath
P015123	Resistance



## KBHAT1

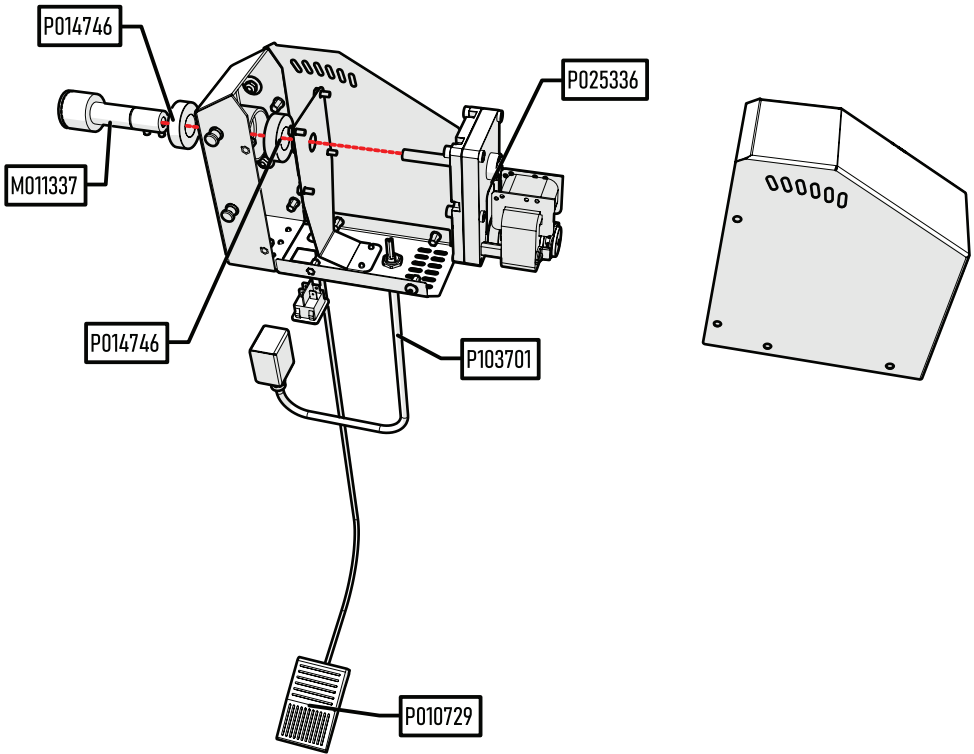
PART CODE	explanation
M008150	Swell
P009625	Motherboard
P006670	Power Supply
P002296	Engine Driver

## Spare Parts List / KBHAT



## KBHAT

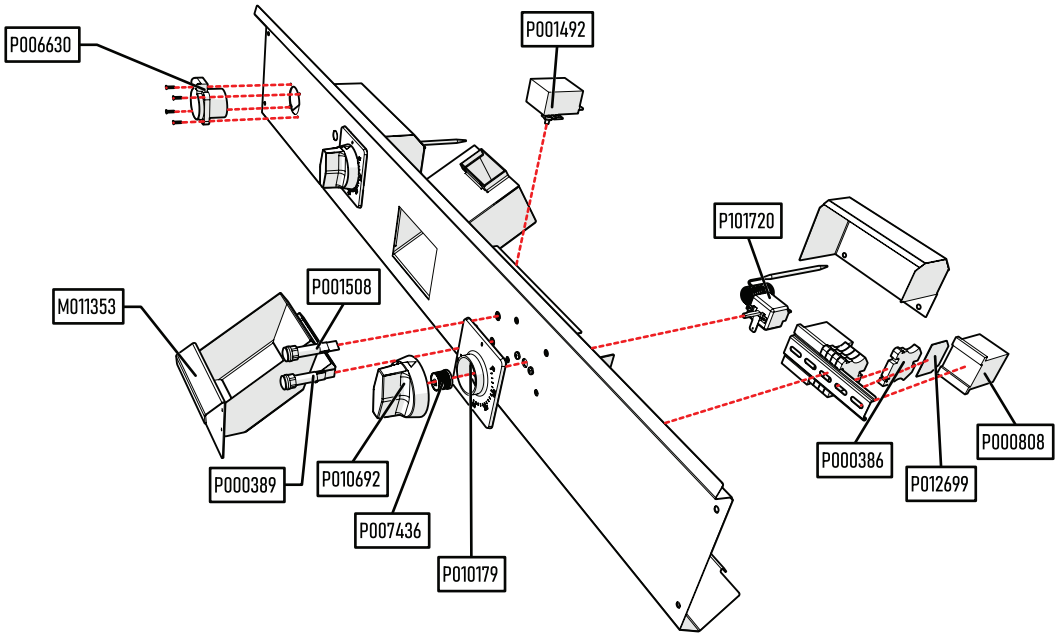
PART CODE	explanation
P000386	Klamens
P002348	SS Stainless
P002758	The Handle is Bakelite
M002913	Adjustable Foot
P009250	Firestone 200x100x20
P010344	Two-speed switch
P010562	Resistance -- Cağ kebab
P010729	Pedaling
M005214	Profile Key



## KBHAT

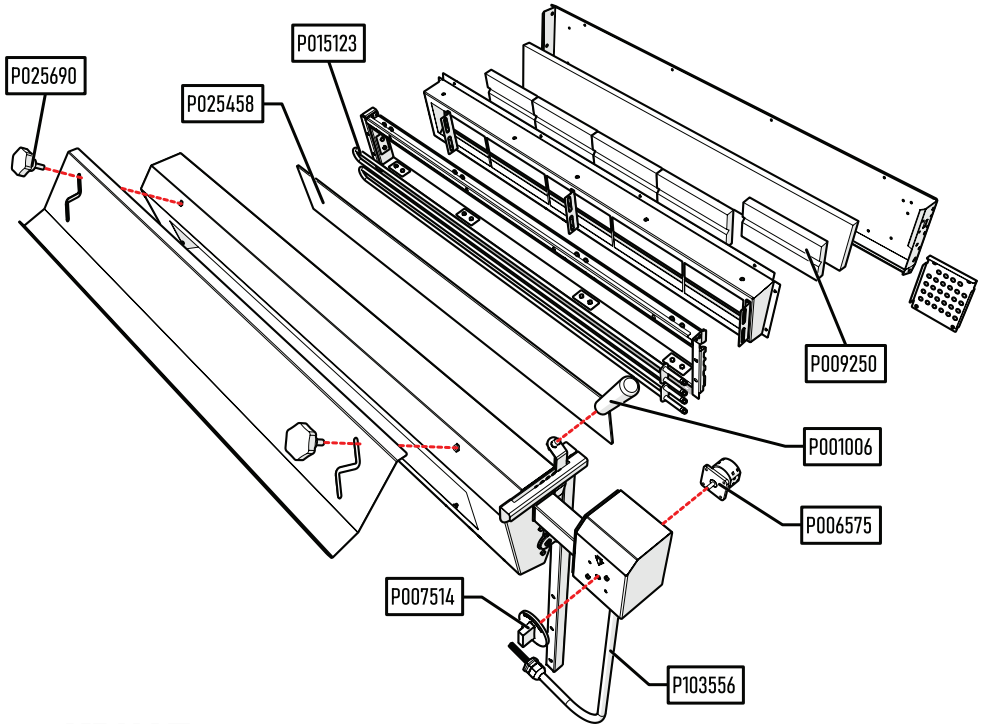
PART CODE	explanation
P010729	Pedaling
P014746	Bearing zz
P025336	Engine
M011337	Skewer Holder parts
P103701	3 X 2.5 CABLE

## Spare Parts List / KBHAT



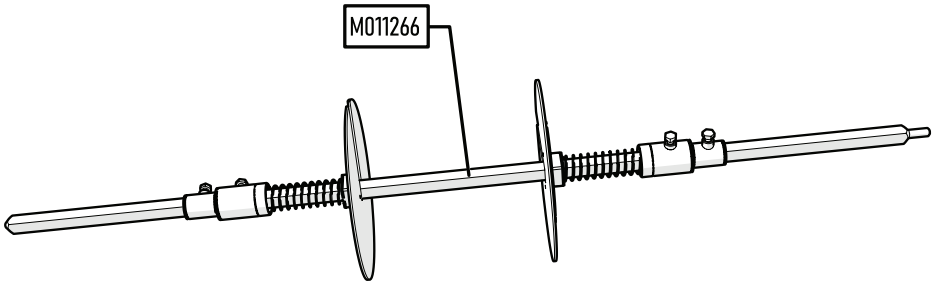
## KBHAT

PART CODE	explanation
P000386	Klamens
P000389	Signal Lamp (Green)
P000808	Lovato Contactor
P001492	238°C Limiter
P001508	Signal Lamp (yellow)
P006630	Socket
P007436	The Button Hub is Electric
P010179	Button Six, Elk.Grill 700
P010692	Button 700 Black
P012699	Terminal Cover
M011353	Drawer
P101720	190°C Thermostat



## KBHAT

PART CODE	explanation
P001006	Ledge
P006575	Khartel
P007514	Electric Rotary January Switch
P009250	Firestone 200x100x20
P015123	Resistance
P025458	Pine
P025690	Wedge
P103556	5x2.5 cable black (700 mm)



PART CODE	explanation
M011266	Swell



GGM Gastro International GmbH  
Weinerpark 16  
D-48607 Ochtrup

[www.ggmgaastro.com](http://www.ggmgaastro.com)      [info@ggmgaastro.com](mailto:info@ggmgaastro.com)  
+49 2553 7220 0